



THE OFFICIAL '011 BENCORE CATALOGUE

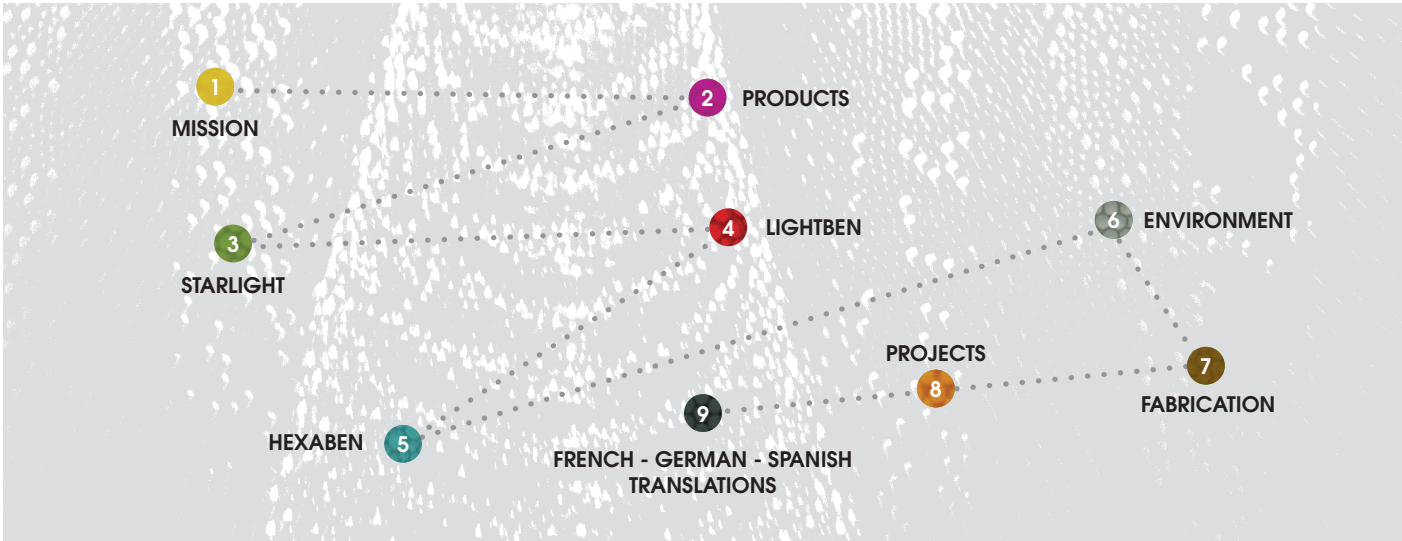




Starlight Plus Clear T backlit with blue light



Starlight Plus Clear T backlit with blue light



Starlight Extra Amber T



Starlight Extra Amber T



Starlight Collection



Lightben Collection



Hexaben Collection

made in italy

MISSION

Tecnologia ed Ecologia da sempre sono i principi ispiratori della produzione Bencore. I pannelli Bencore sono tra i pochi prodotti in cui **tecnologia, ecologia e design** si coniugano perfettamente offrendo un abbinamento di prestazioni meccaniche, leggerezza, trasparenza e colore uniti ad una forte caratterizzazione estetica che, nonostante i tentativi di imitazione, li rendono unici nel loro genere. La gamma dei prodotti Bencore è frutto di un'attività di ricerca e sviluppo tutta italiana nel campo delle tecnologie di avanguardia nel settore delle materie plastiche. Trasparenza, prestazioni meccaniche, leggerezza, efficienza energetica, logistica e installazione, riciclabilità dei materiali e risparmio di materia prima fino al 50% rispetto a materiali concorrenti, fanno sì che i prodotti Bencore rappresentino un fondamentale passo in avanti nel mondo dell'architettura d'interni. **Le materie prime sono tutte di provenienza europea ed i prodotti sono realizzati interamente in Italia.**

Technology and Ecology have always been the inspiring principles of Bencore production. Bencore panels are among the few products where **technology, ecology and design** are perfectly mixed coupling mechanical properties, light weight, translucency, colors and a strong aesthetical quality, features that make Bencore products unique in spite of many attempts of imitation. Bencore product range is the result of an all-Italian R&D activity using state-of-the-art technology in plastic materials production. Translucency, mechanical properties, light weight, energy efficiency, logistics and installation, use of recyclable materials, and saving up to 50% of raw material if compared with similar products, make Bencore products a milestone on the market of interiors architecture products. **All raw materials used come from the European Union and the products are entirely manufactured in Italy.**

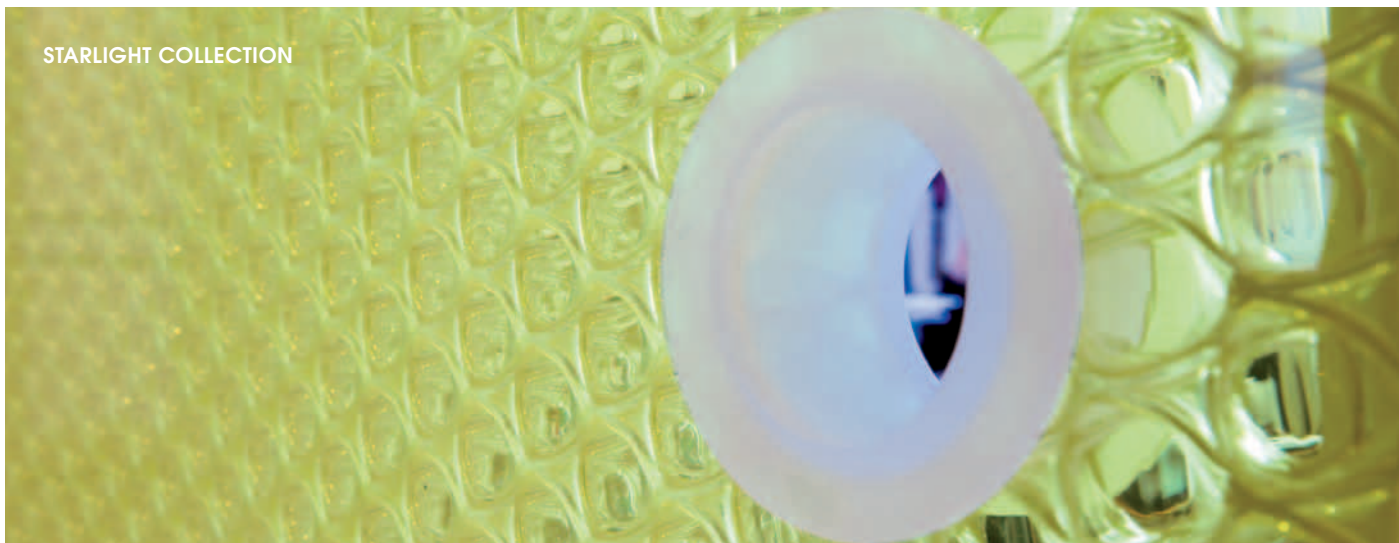


Starlight Plus Clear T

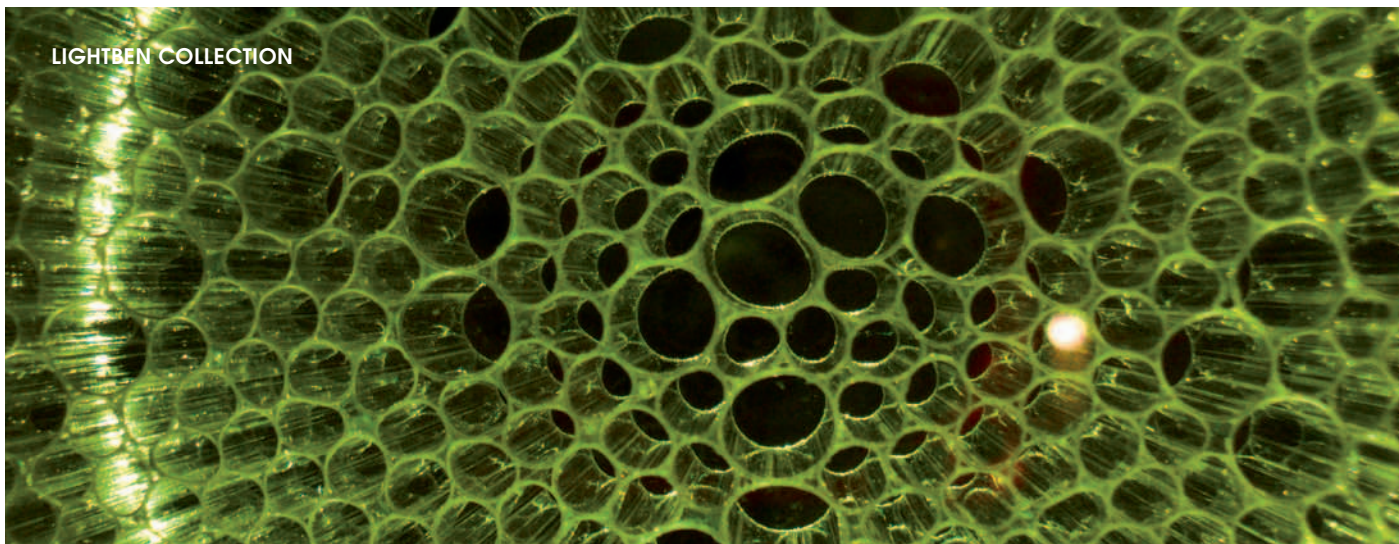


Lightben Clear T

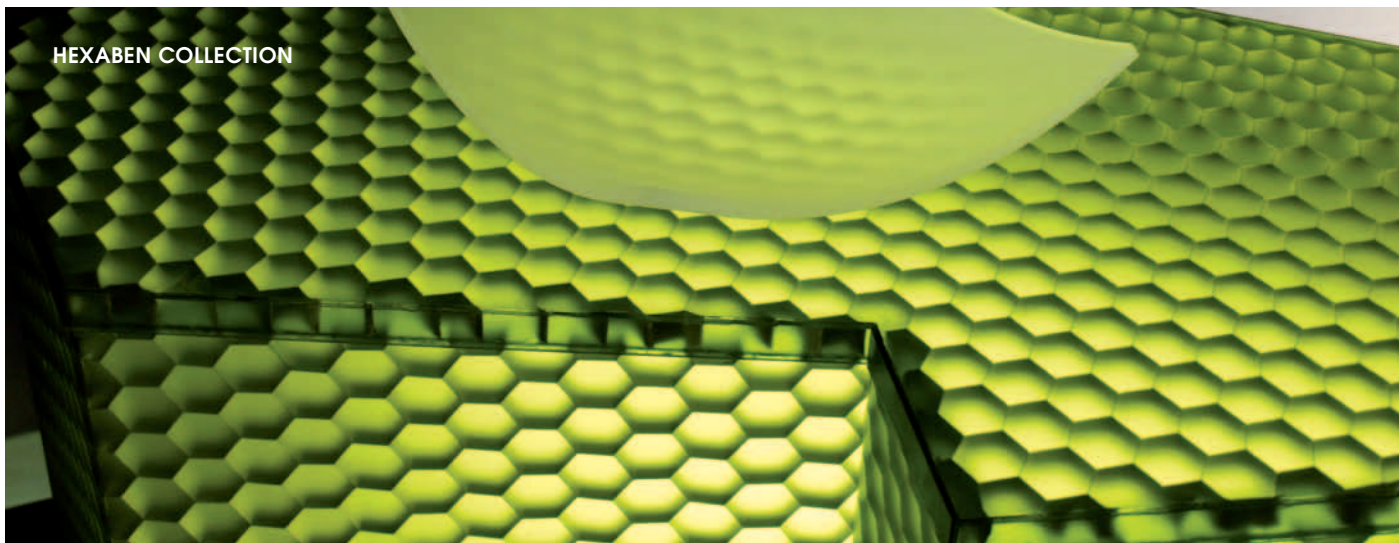
STARLIGHT COLLECTION



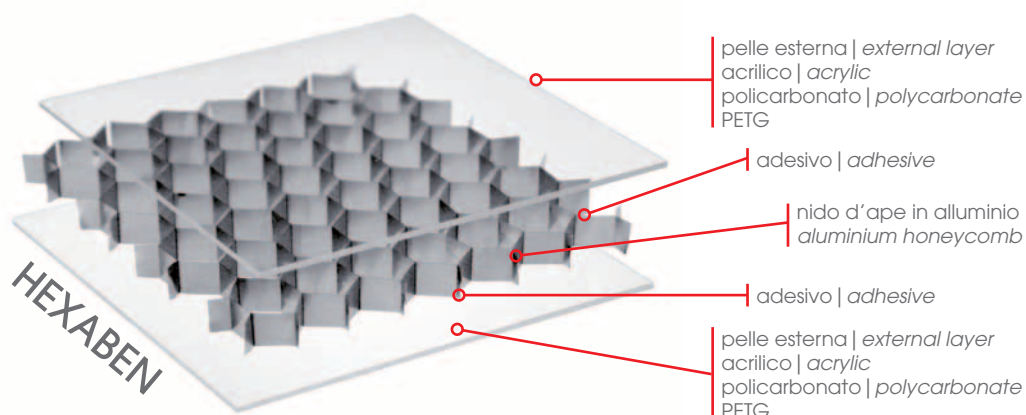
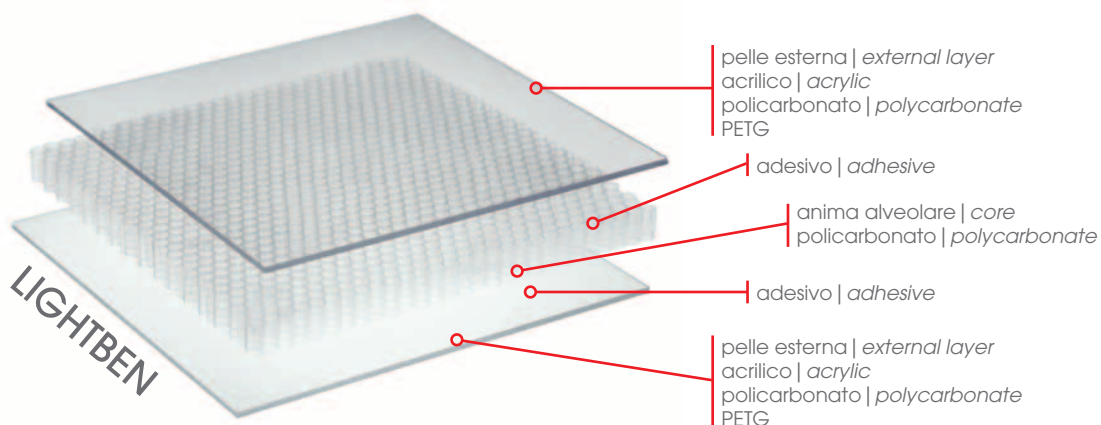
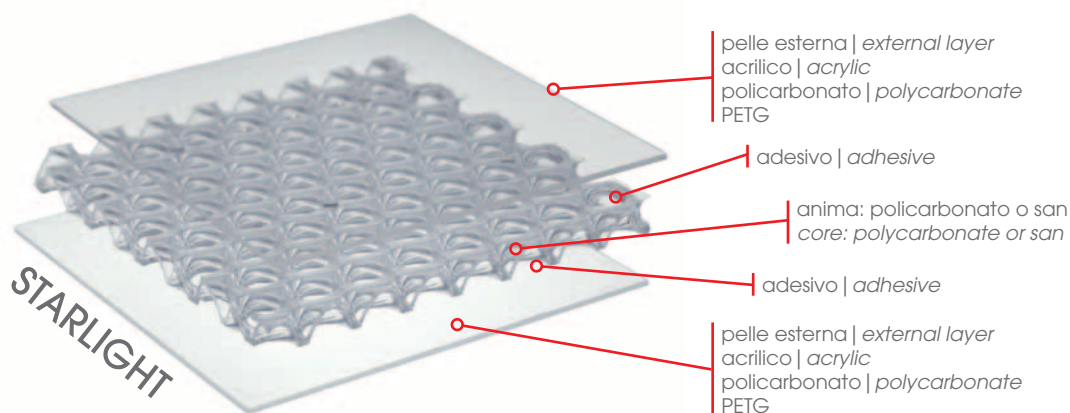
LIGHTBEN COLLECTION



HEXABEN COLLECTION



PRODUCTS





Starlight Plus Clear S backlit with RGB system

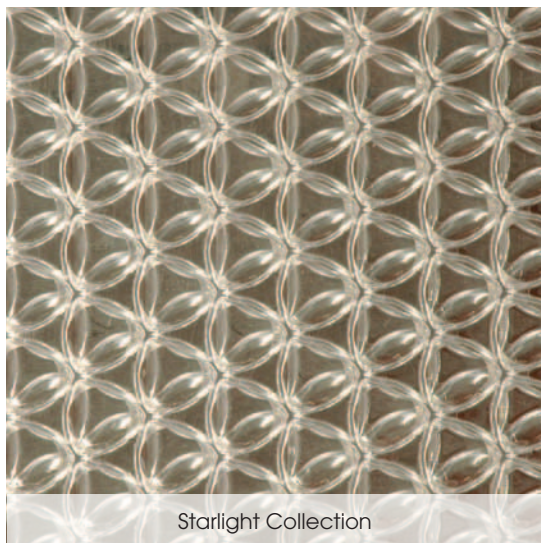
STARLIGHT

Starlight è un pannello composito che integra caratteristiche uniche: leggerezza, strutturalità, trasparenza e design. Nessun altro prodotto racchiude allo stesso tempo queste 4 caratteristiche che lo rendono esclusivo.

Le applicazioni sono innumerevoli: piani, pavimenti sopraelevati, pareti mobili, porte e altre situazioni compatibili con questa tipologia di prodotto.

***Starlight** is a composite panel characterized by lightweight, stiffness, translucency and design. No product has at the same time these 4 features which make Starlight exclusive and unique.*

The applications are countless: tables, raised floors, partition walls, doors and anything that can be made with a composite design panel.



Starlight Collection



Starlight Clear T

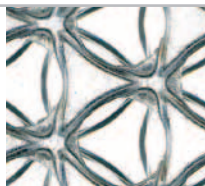
STARLIGHT BASIC EXTRA MAXI

I colori esposti in questa pubblicazione sono stati riprodotti con tecniche di stampa. Pertanto potrebbero mostrare delle leggere differenze rispetto ai colori originali dei pannelli con riguardo alla brillantezza, all'ombreggiatura del colore e alla finitura superficiale.

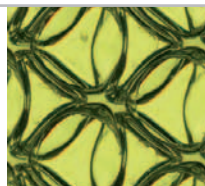
The colours shown on this catalogue are reproduced by a printing process. Therefore they could present slight differences from the original colours of our panels as regards brightness, shade and surface finishing.

GAMMA COLORI STANDARD* STANDARD COLOUR RANGE*

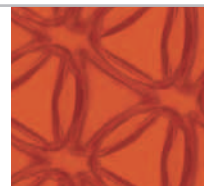
FINITURA LUCIDA GLOSSY FINISHES



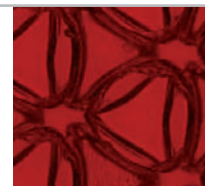
Clear T



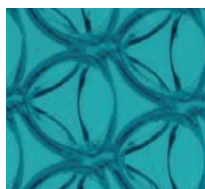
Giallo | Yellow T



Ambra | Amber T



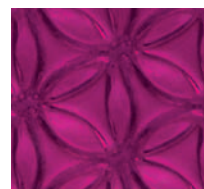
Rosso | Red T



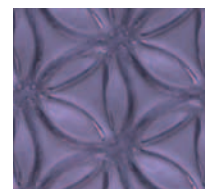
Blu | Blue T



Verde Vetro
Glass Look T



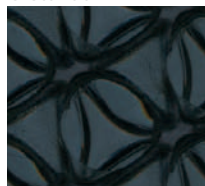
Viola | Purple T



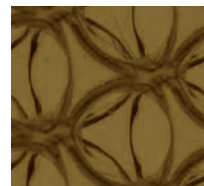
Lilla | Lilac T



Fumè Chiaro
Light Fumè T



Fumè T



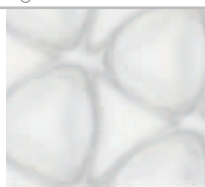
Bronzo Chiaro
Light Bronze T



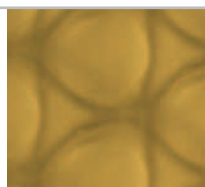
Bronzo | Bronze T

GAMMA COLORI STANDARD* STANDARD COLOUR RANGE*

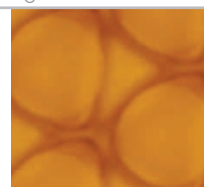
FINITURA SATINATA SATIN FINISHES



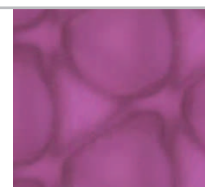
Clear S



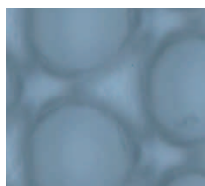
Giallo | Yellow S



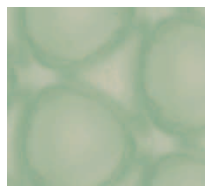
Arancio | Orange S



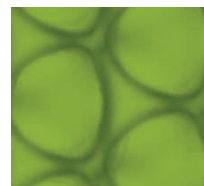
Viola | Purple S



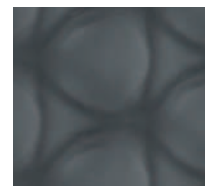
Blu | Blue S



Verde | Green S



Verde Acido
Acid Green S



Fumè S

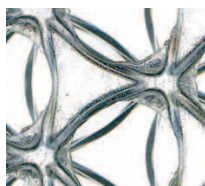
* altri colori
disponibili
su richiesta
**other colours
available
on demand**

STARLIGHT PLUS

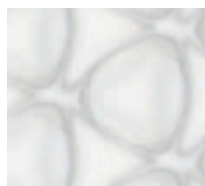
Per applicazioni in interni in cui sia richiesta la resistenza al fuoco (Classe1/Italia,B1/Germania) o la protezione ai raggi UV provenienti da sorgenti luminose artificiali o attraverso vetrate/lucernai

For indoor applications where fire resistance is required (Class1/Italy,B1/Germany) or UV protection from light coming from artificial sources or through windows or skylights.

Clear T



Clear S

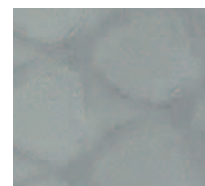


STARLIGHT FLOOR

Per pavimenti sopraelevati traslucidi retro-illuminati. Su richiesta viene fornita la struttura di supporto metallica (1x1m) con piedini regolabili.

For translucent back-lit risen floors. The metal support structure with adjustable feet (1x1m) is supplied on demand.

Clear



STARLIGHT BASIC | EXTRA PLUS | FLOOR | MAXI

STARLIGHT BASIC

Il prodotto base della collezione Starlight
Starlight collection standard product

STARLIGHT EXTRA

Per applicazioni con richiesta di prestazioni strutturali superiori
Superior in rigidity and well suited for high-load applications

STARLIGHT PLUS

Per applicazioni ove sia richiesta la classe di reazione al fuoco
Suitable for applications where fire certificates are required

STARLIGHT FLOOR

Per pavimenti sopraelevati retroilluminati
Designed for backlitged raised-floors

STARLIGHT MAXI

Versione da 45 a 60 mm di spessore | *Thicknesses: 45 and 60 mm*

	SPESSORE THICKNESS mm							LARG. WIDTH	LUNG. LENGTH	PESO WEIGHT	FASCIA PREZZO PRICE GROUP	CERT. AL FUOCO FIRE CERT.
	19	21	34	36	40	45	60	mm	mm	Kg/m²		
STARLIGHT BASIC	x	x						1000	3015	9,3 11,6	C	-
STARLIGHT EXTRA	x	x	x	x				1000	3015	9,7 12,1	B	-
STARLIGHT PLUS	x		x					1000	3015	10,0	B	x
STARLIGHT MAXI						x	x	1000	3015	12,1	A	-
STARLIGHT FLOOR					x			1000	3015	9,7	A	x

FASCIA DI PREZZO | PRICE GROUP
A= più costoso | *more expensive*
C= meno costoso | *less expensive*





Lightben Clear S backlit with RGB system

LIGHTBEN

Lightben è un pannello composito simile allo *Starlight* ma ancora più leggero e con celle interne di forma differente - cilindrica. Ha caratteristiche di **trasmissione e diffusione della luce uniche** nel suo genere che lo rendono particolarmente indicato per utilizzi retroilluminati.

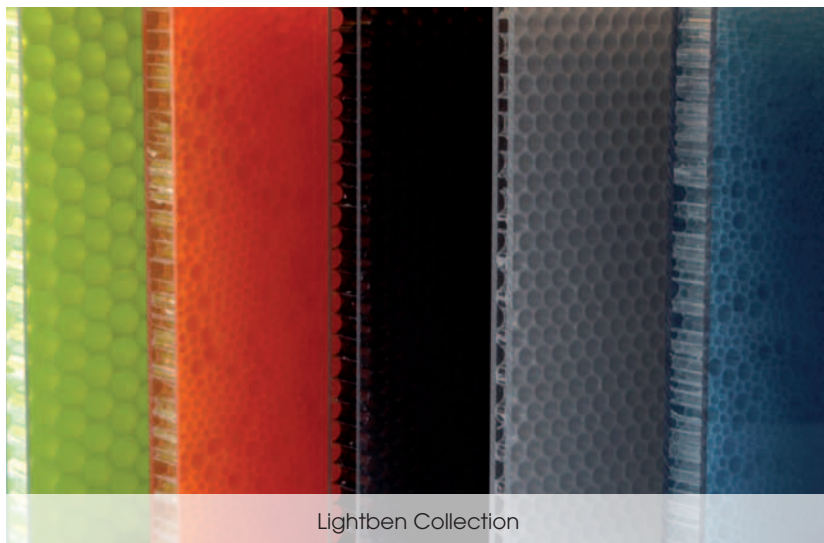
Le applicazioni sono innumerevoli: piani, pareti mobili, porte, controsoffitti e altre soluzioni compatibili con questa tipologia di prodotto.

*Lightben is a composite panel similar to Starlight but lighter and with different shape core cells - cylindric. The unique structure of the panel reacts with light, creating **a unique semi-translucent effect**, making it suitable especially for back lighting.*

The applications are countless: tables, partition walls, ceilings and anything that can be made with a composite design panel.



Lightben Collection



Lightben Collection

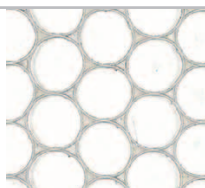
LIGHTBEN BASIC LARGE 36 MINI

I colori esposti in questa pubblicazione sono stati riprodotti con tecniche di stampa. Pertanto potrebbero mostrare delle leggere differenze rispetto ai colori originali dei pannelli con riguardo alla brillantezza, all'ombreggiatura del colore e alla finitura superficiale.

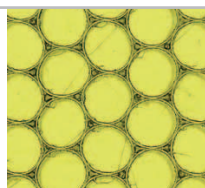
The colours shown on this catalogue are reproduced by a printing process. Therefore they could present slight differences from the original colours of our panels as regards brightness, shade and surface finishing.

GAMMA COLORI STANDARD* STANDARD COLOUR RANGE*

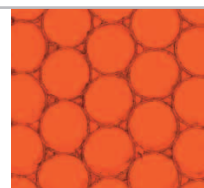
FINITURA LUCIDA GLOSSY FINISHES



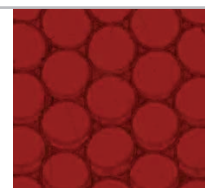
Clear T



Giallo | Yellow T



Ambra | Amber T



Rosso | Red T



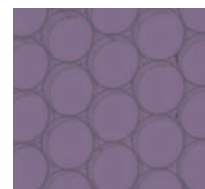
Blu | Blue T



Verde Vetro
Glass Look T



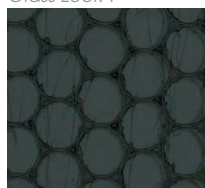
Viola | Purple T



Lilla | Lilac T



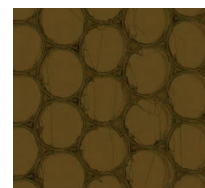
Fumè Chiaro
Light Fumè T



Fumè T



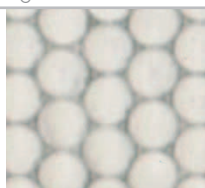
Bronzo Chiaro
Light Bronze T



Bronzo | Bronze T

GAMMA COLORI STANDARD* STANDARD COLOUR RANGE*

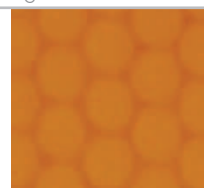
FINITURA SATINATA SATIN FINISHES



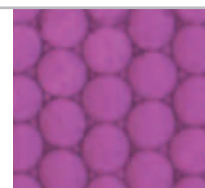
Clear S



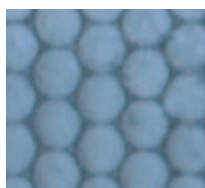
Giallo | Yellow S



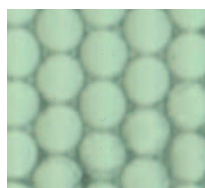
Arancio | Orange S



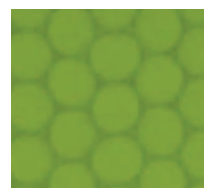
Viola | Purple S



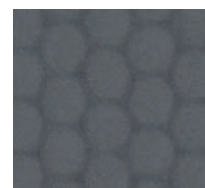
Blu | Blue S



Verde | Green S



Verde Acido
Acid Green S



Fumè S

* altri colori
disponibili
su richiesta
**other colours
available
on demand**

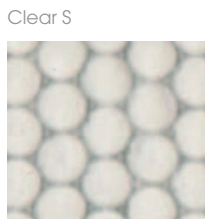
LIGHTBEN PLUS | MINI PLUS

Per applicazioni in interni in cui sia richiesta la resistenza al fuoco (Classe1/Italia,B1/Germania) o la protezione ai raggi UV provenienti da sorgenti luminose artificiali o attraverso vetrate/lucernai

For indoor applications where fire resistance is required (Class1/Italy,B1/Germany) or UV protection from light coming from artificial sources or through windows or skylights.



Clear T



Clear S

LIGHTBEN

BASIC | PLUS | LARGE 36 | MINI
MINI PLUS | CC PLUS | KAOS
CC BLACK | KAOS 3D

LIGHTBEN BASIC

Il prodotto base della collezione Lightben
Lightben collection standard product

LIGHTBEN PLUS

Per applicazioni ove sia richiesta la classe di reazione al fuoco
Suitable for applications where fire certificates are required

LIGHTBEN LARGE 36

Lightben proposto con celle del diametro di 10 mm (dim. standard 7 mm)
Larger cells size: 10 mm (standard size 7 mm)

LIGHTBEN MINI

Lightben proposto nella versione sottile da 9 e da 11 mm di spessore
Thicknesses: 9 and 11 mm

LIGHTBEN MINI PLUS

Lightben Mini con anima e pelli trasparenti come per il Lightben Plus
Lightben Mini with transparent core and skins like the Lightben Plus

LIGHTBEN CC PLUS

Anima costituita da cilindri in Policarbonato colorato a pelli esterne di PETG trasparente incolore e finitura lucida o satinata e Policarbonato UV protetto | *Polycarbonate coloured core in cylindrical cells with external layers in clear PETG with satin or glossy finishes and UV protected Polycarbonate*

LIGHTBEN CC BLACK

Anima costituita da cilindri in Policarbonato di colore nero a pelli esterne in PETG trasparente incolore e finitura lucida o satinata | *Polycarbonate black core in cylindrical cells with external layers in clear PETG with satin or glossy finishes*

LIGHTBEN KAOS

Le celle hanno diametri variabili da 4 e 7 mm | *Various cells size: 4-7 mm*

LIGHTBEN KAOS 3D BLACK

Pannello composito con anima in polycarbonato alveolare di colore nero a celle di 3 diametri (4-7-12 mm) mescolate fra loro | *Polycarbonate Black core in cylindrical cells with three diameter sizes (4-7-12 mm)*

FASCIA DI PREZZO | PRICE GROUP

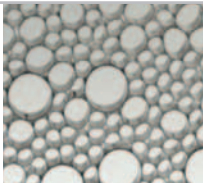
A= più costoso | *more expensive*

C= meno costoso | *less expensive*

	SPESSORE THICKNESS mm						LARG. WIDTH	LUNG. LENGTH	PESO WEIGHT	FASCIA PREZZO PRICE GROUP	CERT. AL FUOCO FIRE CERT.
	9	11	19	21	34	36	mm	mm	Kg/m ²		
LIGHTBEN BASIC			x	x			1000	3015	6,0 8,3	C	-
LIGHTBEN PLUS			x				1000	3015	6,2	B	x
LIGHTBEN LARGE 36					x	x	1000	3015	7,5 9,5	A	-
LIGHTBEN MINI		x					1000	3015	7,6	C	-
LIGHTBEN MINI PLUS	x						1000	3015	5,5	C	x
LIGHTBEN CC PLUS			x				1000	3015	6,2 5,0	B	x
LIGHTBEN CC BLACK			x				1000	3015	6,2 5,0	A	x
LIGHTBEN KAOS			x	x			1000	3015	6,1 8,4	A	x
LIGHTBEN KAOS 3D			x	x			1000	3015	6,5 8,5	A	x

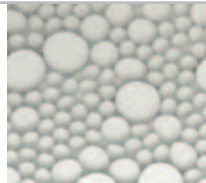
**LIGHTBEN
KAOS 3D
BLACK**

FINITURA LUCIDA
GLOSSY FINISHES



Nero | Black T

FINITURA SATINATA
SATIN FINISHES



Nero | Black S

**LIGHTBEN
CC BLACK**

FINITURA LUCIDA
GLOSSY FINISHES



Nero | Black T

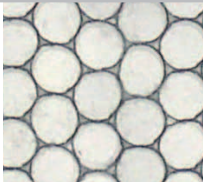
FINITURA SATINATA
SATIN FINISHES



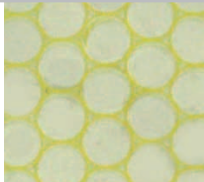
Nero | Black S

**LIGHTBEN
CC PLUS**

FINITURA LUCIDA
GLOSSY FINISHES
FINITURA SATINATA
SATIN FINISHES



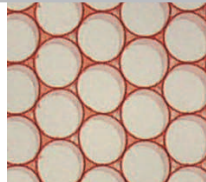
Argento | Silver



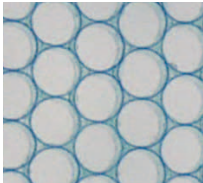
Giallo | Yellow



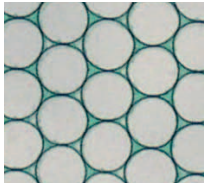
Arancio | Orange



Rosso | Red



Azzurro | Light Blu



Verde | Green



Lightben Kaos



Lightben Kaos

LIGHTBEN
KAOS

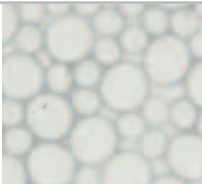
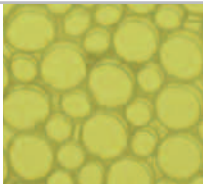

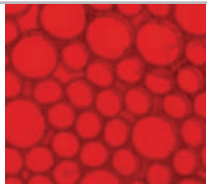
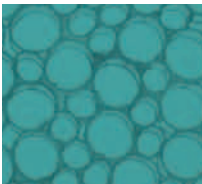



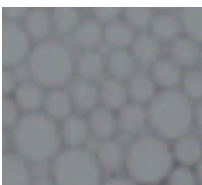
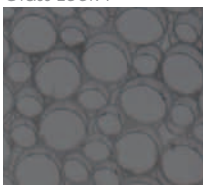


I colori esposti in questa pubblicazione sono stati riprodotti con tecniche di stampa. Pertanto potrebbero mostrare delle leggere differenze rispetto ai colori originali dei pannelli con riguardo alla brillantezza, all'ombreggiatura del colore e alla finitura superficiale.

The colours shown on this catalogue are reproduced by a printing process. Therefore they could present slight differences from the original colours of our panels as regards brightness, shade and surface finishing.

* altri colori
disponibili
su richiesta
**other colours
available
on demand**

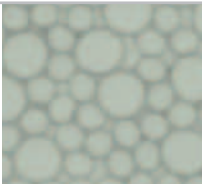






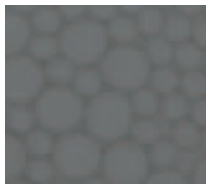
GAMMA COLORI
STANDARD*
STANDARD
COLOUR RANGE*

FINITURA LUCIDA
GLOSSY FINISHES

			
Clear T	Giallo Yellow T	Ambra Amber T	Rosso Red T
			
Blu Blue T	Verde Vetro Glass Look T	Viola Purple T	Lilla Lilac T
			
Fumè Chiaro Light Fumè T	Fumè T	Bronzo Chiaro Light Bronze T	Bronzo Bronze T

GAMMA COLORI
STANDARD*
STANDARD
COLOUR RANGE*

FINITURA SATINATA
SATIN FINISHES

			
Clear S	Giallo Yellow S	Arancio Orange S	Viola Purple S
			
Blu Blue S	Verde Green S	Verde Acido Acid Green S	Fumè S



Lightben CC Black T



Lightben CC Black T



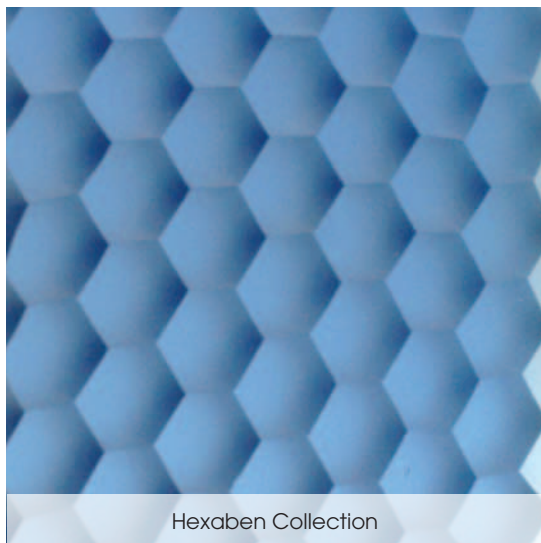
Hexaben Large Blue

HEXABEN

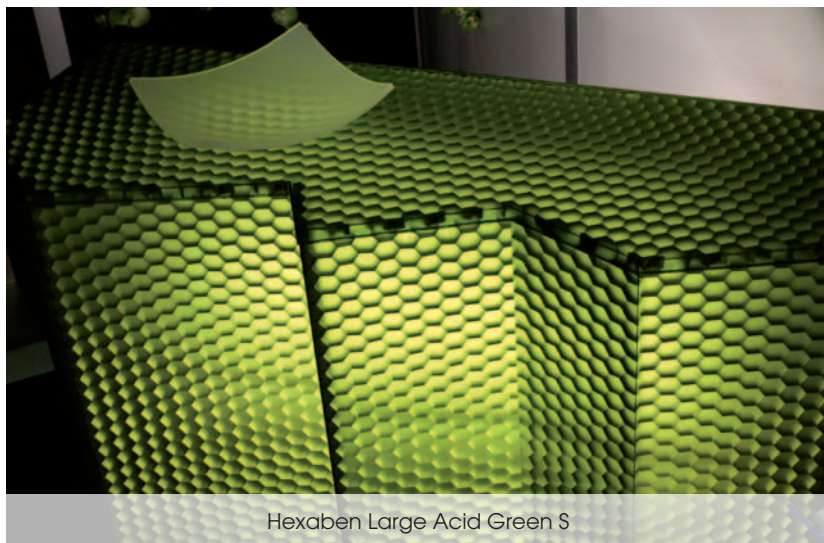
Hexaben, l'ultima novità di Bencore®, **combina alluminio** (anima interna) e **acrilico o petg** (rivestimento esterno). È il pannello più leggero della gamma e nella versione con pelli satinatate **produce giochi di trasparenza e ombra inimitabili**. Questo prodotto abbina l'elemento estremamente tecnico dell'anima in alluminio, all'elemento emozionale trasmesso dai diversi giochi di luce che si creano all'interno dei singoli alveoli e che fanno "vivere" il composito.

Le applicazioni sono innumerevoli: piani, pareti mobili, porte e altre soluzioni compatibili con questa tipologia di prodotto.

*Hexaben is the last creation of Bencore®. Hexaben **combines aluminum** (core) and **acrylic** (external sheets). In the Bencore® collection, Hexaben is the lightest panel and **creates a unique semi-translucent effects**, especially with satin/frost finish. Hexaben combines a technical element, the aluminum core, and an emotional one, due to the light effects created within the internal cells which "brings to life" the composite panel. The applications are countless: indoor architectural, design and furniture applications.*



Hexaben Collection



Hexaben Large Acid Green S

HEXABEN SMALL LARGE

I colori esposti in questa pubblicazione sono stati riprodotti con tecniche di stampa. Pertanto potrebbero mostrare delle leggere differenze rispetto ai colori originali dei pannelli con riguardo alla brillantezza, all'ombreggiatura del colore e alla finitura superficiale.

The colours shown on this catalogue are reproduced by a printing process. Therefore they could present slight differences from the original colours of our panels as regards brightness, shade and surface finishing.

* altri colori disponibili su richiesta
other colours available on demand

GAMMA COLORI
STANDARD*
STANDARD
COLOUR RANGE*

FINITURA LUCIDA
GLOSSY FINISHES



Clear T



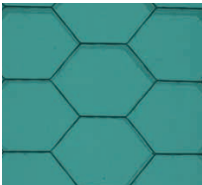
Giallo | Yellow T



Ambra | Amber T



Rosso | Red T



Blu | Blue T



Verde Vetro
Glass Look T



Viola | Purple T



Lilla | Lilac T



Fumè Chiaro
Light Fumè T



Fumè T



Bronzo Chiaro
Light Bronze T



Bronzo | Bronze T

GAMMA COLORI
STANDARD*
STANDARD
COLOUR RANGE*

FINITURA SATINATA
SATIN FINISHES



Clear S



Giallo | Yellow S



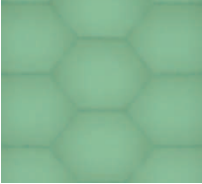
Arancio | Orange S



Viola | Purple S



Blu | Blue S



Verde | Green S



Verde Acido
Acid Green S



Fumè S

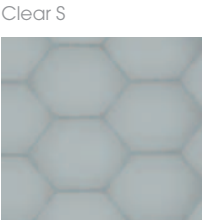
HEXABEN PLUS | LARGE PLUS

Per applicazioni in interni in cui sia richiesta la resistenza al fuoco (Classe1/Italia,B1/Germania) o la protezione ai raggi UV provenienti da sorgenti luminose artificiali o attraverso vetrate/lucernai

For indoor applications where fire resistance is required (Class1/Italy,B1/Germany) or UV protection from light coming from artificial sources or through windows or skylights.



Clear T



Clear S

HEXABEN SMALL | SMALL PLUS LARGE | LARGE PLUS

HEXABEN SMALL

Il prodotto base della collezione Hexaben: la cella ha un diametro di 9 mm
Hexaben collection standard product with 9 mm cell

HEXABEN SMALL PLUS

Pannello composito ultra-leggero con anima a nido d'ape d'alluminio, accoppiata a pelli di rivestimento in PETG trasparente incolore e finitura lucida o satinata | *Ultra-light composite panel with a honeycomb aluminium core, bonded to external layers in clear PETG with or glossy finishes*

HEXABEN LARGE

Hexaben proposto nella versione con celle di grandi dimensioni (25 mm)
Hexaben with cells of great dimension (25 mm)

HEXABEN LARGE PLUS

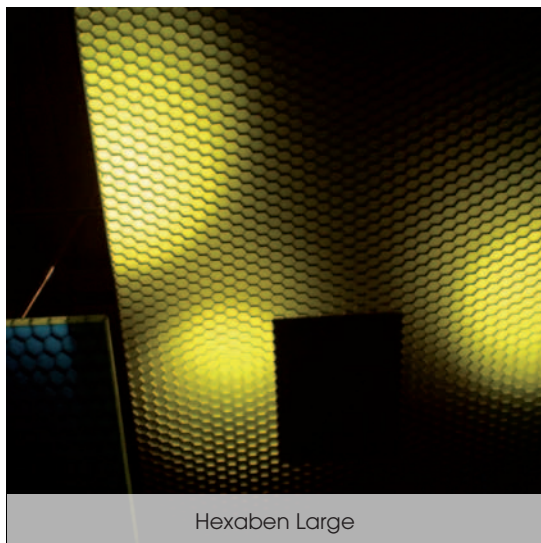
Prodotto della linea Hexaben con certificato di reazione al fuoco
Hexaben product line with a certificate of reaction to fire

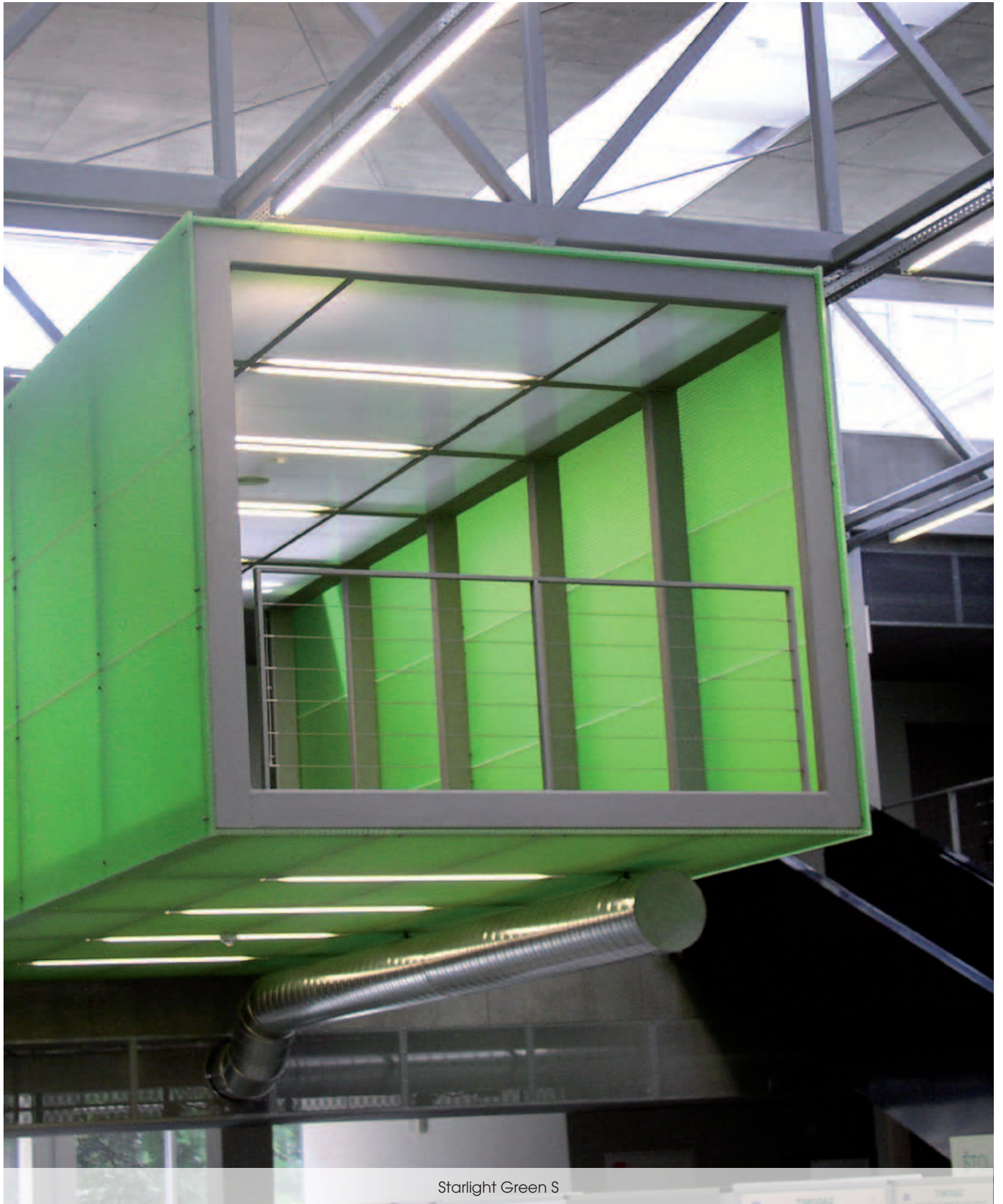
	SPESSORE THICKNESS mm		LARG. WIDTH	LUNG. LENGTH	PESO WEIGHT	FASCIA PREZZO PRICE GROUP	CERT. AL FUOCO FIRE CERT.
	19	21	mm	mm	Kg/m ²		
HEXABEN SMALL	x	x	1000	3015	9,3 11,6	B	-
HEXABEN SMALL PLUS	x	x	1000	3015	9,7 12,1	B	-
HEXABEN LARGE	x		1000	3015	10,0	B	-
HEXABEN LARGE PLUS	x	x	1000	3015	12,1	B*	x

FASCIA DI PREZZO | PRICE GROUP

A= più costoso | *more expensive*

C= meno costoso | *less expensive*





Starlight Green S



ENVIRONMENT

BENCORE è member del Green Building Council Italia - Criteri di certificazione LEED

Il **Green Building Council Italia** è un'associazione non profit, parte integrante del **USA GBC**, società che promuove il sistema di certificazione indipendente **LEED - Leadership in Energy and Environmental Design** - i cui parametri stabiliscono precisi criteri di progettazione e realizzazione di edifici salubri, energeticamente efficienti ed a impatto ambientale contenuto.

Il sistema di certificazione legato al marchio **LEED** stabilisce inoltre un valore di mercato per i "green building", cioè edifici che ottengano appunto la certificazione LEED. **LEED** è ad oggi il criterio più utilizzato al mondo per questo tipo di certificazione. L'utilizzo dei pannelli **Bencore** consente l'acquisizione di **CREDITI LEED** per edifici sia di nuova costruzione che ristrutturati, nei quali vengono impiegati. I prodotti Bencore contribuiscono all'acquisizione di punteggio per i seguenti crediti **LEED**:

EA - Energia e Atmosfera

Credito 1 - Ottimizzazione delle prestazioni energetiche

1 - 19 punti

MR - Materiali e Risorse

Credito 1.1 - Riutilizzo degli edifici: mantenimento di murature, solai e coperture esistenti

1 - 3 punti

Credito 1.2 - Riutilizzo degli edifici: mantenimento del 50% degli elementi non strutturali interni

2 punti

Credito 3 - Riutilizzo del materiale

1 - 2 punti

Credito 5 - Materiali estratti, lavorati e prodotti a distanza limitata (materiali regionali)

1 - 2 punti

QI - Qualità ambientale Interna

Credito 4.3/op. 2 - Materiali basso emissivi: pavimentazioni

1 punto

Credito 8.1 - Luce naturale e visione: luce naturale per il 75% degli spazi

1 punto

Maggiori informazioni su GBC e CREDITI LEED sul sito bencore.it

BENCORE member of GBC Italia - LEED certification

Green Building Council Italy is a nonprofit association, branch of **USA GBC**, a company promoting the **LEED** independent certification system - **Leadership in Energy and Environmental Design**. **LEED** is an internationally recognized green building certification system, providing third-party verification that a building or community was designed and built using techniques aimed at improving performance about energy savings, water efficiency, CO₂ emissions reduction, improved indoor environmental quality, stewardship of resources and sensitivity to their impacts. **LEED** is currently the most utilized system worldwide for this type of certifications. The use of **Bencore** panels allows the acquisition of **LEED CREDITS** for new buildings or renovations:

EA - Energy and Atmosphere

Credit 1 - Optimize Energy Performance

1 - 19 points

MR - Materials and resources

Credit 1.1 - Building reuse: maintain Existing walls, floors and roof

1 - 3 points

Credit 1.2 - Building reuse: maintain Existing interior nonstructural elements

2 points

Credit 3 - Materials reuse

1 - 2 points

Credit 5 - Regional Materials

1 - 2 points

QI - Indoor environmental Quality

Credit 4.3/op. 2 - Low-Emitting materials: flooring systems

1 point

Credit 8.1 - Daylight and views: daylight

1 point

For further information on GBC and LEED CREDITS visit bencore.it



Starlight Extra Orange S

FABRICATION

Tutti i prodotti della linea **Bencore** possono essere lavorati e tagliati a misura (anche a 45°) secondo le necessità, curvati e bordati. Si possono realizzare cubi e altre forme geometriche (consultare il sito web www.plasticdetails.it per alcuni esempi). **Bencore** propone diversi sistemi di installazione per i propri pannelli: fra questi, ad esempio, un sistema per porte scorrevoli che privilegia qualità ed estetica. I pannelli Bencore possono comunque essere installati utilizzando sistemi standard facilmente reperibili sul mercato. **Bencore** ha messo a punto un prodotto specifico per la realizzazione di pavimenti sopraelevati retroilluminati, lo **Starlight Floor** per il quale è stato studiato un apposito supporto 1mt x 1mt.

Per informazioni tecniche consultare il manuale prodotto sul nostro sito internet www.bencore.it

*All **Bencore** products can be worked and cut according to specifications, bent and edged. Cubes and other geometrical shapes can be manufactured (see www.plasticdetails.it web site for examples). **Bencore** has chosen a special sliding door system for its panels with focus on quality and aesthetics. **Bencore** panels can be installed using standard systems that are easily available in the market. **Bencore** created a specific product for back-lighted raised floors, **Starlight Floor** and also a special support system of 1mt x 1 mt which is included in the Bencore products range.*

For technical information please see our product manual on www.bencore.it



Lightben Kaos Orange T



Starlight Clear T



DAL MATERIALE AL PROGETTO

Starlight Clear T



FROM MATERIAL TO PROJECT

Starlight Plus Clear S backlighted with RGB system



Starlight Yellow T



PROJECTS

sul sito Bencore più di 220 foto di progetti
on Bencore web site more than 220 projects' photos

Lightben Kaos Clear T backlitged with RGB system

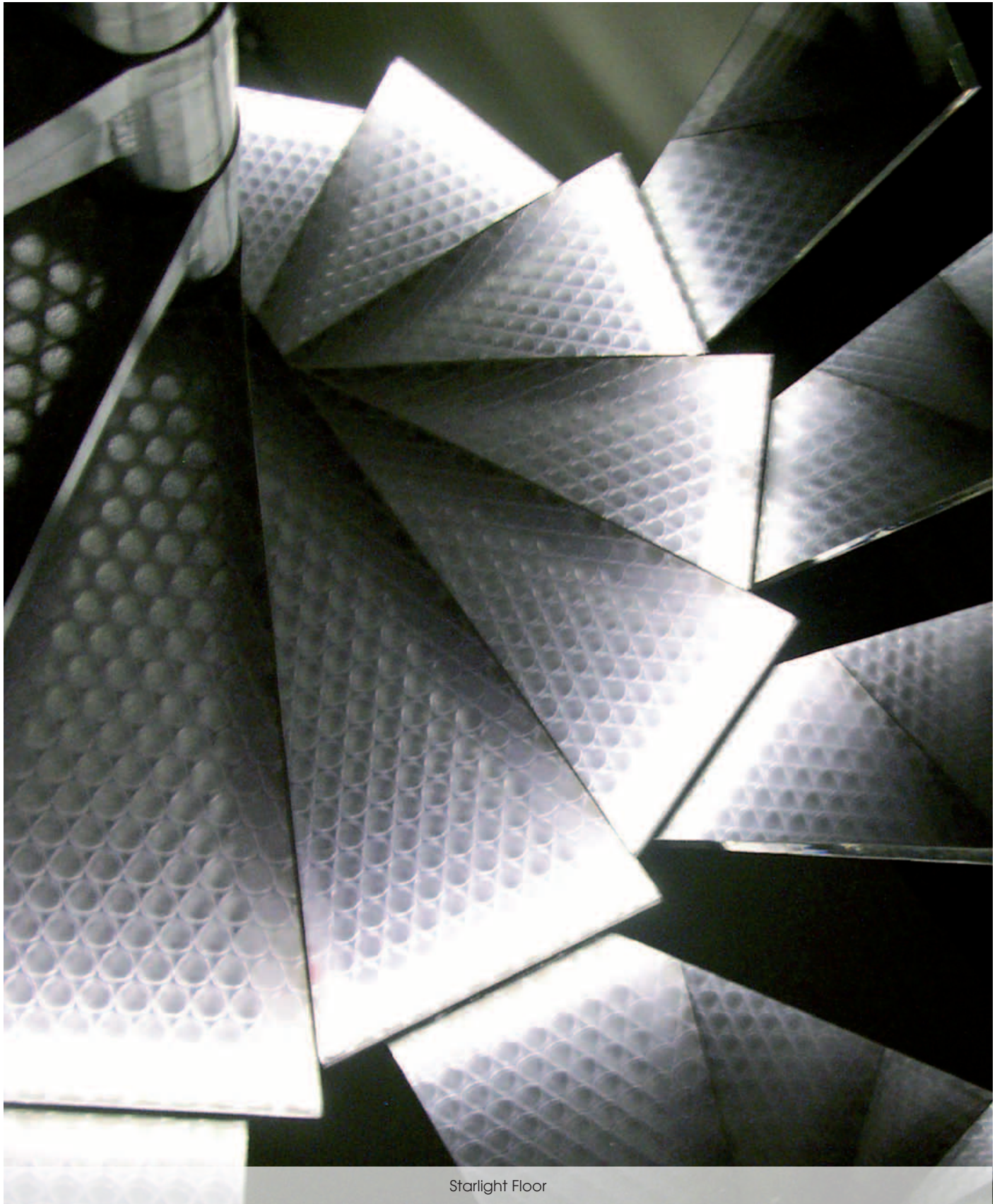


Lightben Clear S



PROJECTS

sul sito Bencore più di 220 foto di progetti
on Bencore web site more than 220 projects' photos



Starlight Floor

A large, glowing orange chair is the central focus, sitting on a highly reflective floor that mirrors its form. Two spotlights on the floor cast bright beams of light onto the chair's base. In the background, a large window or glass wall is visible, with a poster featuring a silhouette and the word "L'OSTAGGI" partially seen. The overall atmosphere is futuristic and artistic.

PROJECTS

sul sito Bencore più di 220 foto di progetti
on Bencore web site more than 220 projects' photos

MISSION

| 03

Technologie et écologie ont toujours été les principes inspirateurs de la production Bencore. Les panneaux Bencore sont parmi les quelques produits où la technologie, l'écologie et le design sont parfaitement associés, légèreté, translucidité et couleurs permettant une parfaite harmonie esthétique et innovante. Les caractéristiques qui rendent les produits Bencore unique en dépit de nombreuses tentatives d'imitation. La gamme de produits Bencore est le résultat d'un savoir faire Italien par de nombreuses années de recherches et grâce à une technologie de pointe ont permis l'élaboration de ces panneaux offrant des propriétés de Transmission lumineuse, d'isolation, de légèreté, et facilité d'installation. Bencore dans sa logistique et sa production en utilisant des matériaux recyclables économise jusqu'à 50% de la matière première en comparaison avec des produits similaires. La fabrication des produits Bencore une étape importante sur le marché des matériaux pour l'architecture intérieure. Toutes les matières premières utilisées proviennent de l'Union Européenne, les produits sont entièrement fabriqués en Italie.

STARLIGHT

| 07

Starlight est un panneau composite caractérisé par sa légèreté, sa rigidité, sa transparence et son design. Aucun produit ne peut répondre à ces 4 critères rendant le Starlight exclusif et unique. Les applications sont multiples: tables, planchers surélevés, cloisonnement, portes et tout ce qui peut être fait avec un panneau design.

STARLIGHT BASIC | Starlight produit standard _ **STARLIGHT EXTRA** | Rigidité Supérieure et bien adapté aux applications à forte charge _ **STARLIGHT PLUS** | Convient pour les applications exigent des P.V. feu _ **STARLIGHT FLOOR** | Conçu pour rehaussement de sol possible de rétro-éclairé _ **STARLIGHT MAXI** | Epaisseurs: 45 et 60 mm

LIGHTBEN

| 11

Lightben est un panneau composite similaire au Starlight, mais plus léger avec différentes cellules cylindrique type "Nid d'abeille". Cette structure unique réagit avec la lumière, créant un effet unique semi-translucides, ce qui convient parfaitement à un retro-éclairage. Les applications sont multiples: tables, cloisons, plafonds et tout ce qui peut être fait avec un panneau design.

LIGHTBEN BASIC | Lightben produit standard _ **LIGHTBEN PLUS** | Convient pour les applications exigent des P.V. feu _ **LIGHTBEN LARGE 36** | Taille des cellules agrandie à 10 mm (taille standard de 7 mm) _ **LIGHTBEN MINI** | Epaisseurs: 9 et 11 mm _ **LIGHTBEN MINI PLUS** | Lightben Mini cœur translucide et peaux identique au Lightben Plus _ **LIGHTBEN CC PLUS** | Cœur avec cellules de couleur en Polycarbonate, les peaux externes sont en PETG incolore la finition brillante ou satinée variante possible avec protection UV _ **LIGHTBEN CC NOIR** | Cœur avec cellules de couleur noir en Polycarbonate, les peaux externes sont en PETG incolore finition brillante ou satinée _ **LIGHTBEN KAOS** | Cœur composé de Plusieurs cellules de différent diamètre (taille 4-7 mm) _ **LIGHTBEN KAOS 3D NOIR** | Cœur avec cellule de couleur noire en Polycarbonate de différent diamètres (taille 4-7-12 mm)

HEXABEN

| 17

Hexaben est la dernière création de Bencore ®. L'Hexaben combine l'aluminium (cœur) et acrylique (peaux externes). Dans gamme Bencore ®, l'Hexaben est le plus léger des panneaux, le cœur en aluminium permet d'avoir des effets de jeux de lumière au cœur du panneau par les cellules internes apportant de la vie à ce panneau composite.

| 03

Les applications sont multiples: applications en architecture d'intérieur, en design et en mobilier divers.

HEXABEN SMALL | produit Hexaben standard (cellule diamètre 9 mm) _ **HEXABEN SMALL PLUS** | Ultraléger panneau composite avec le cœur en aluminium type "nid d'abeilles", avec des peaux externes en PETG transparent incolore finition brillante ou mat _ **HEXABEN LARGE** | Hexaben avec des cellules grande dimension (diamètre 25 mm) _ **HEXABEN LARGE PLUS** | ligne de produits Hexaben avec un certificat de réaction au feu

ENVIRONNEMENT

| 21

BENCORE membre de GBC Italie - certification LEED
LEED est un système qui certifie le caractère environnemental des bâtiments, reconnu internationalement. Il apporte la vérification par un tiers qu'une construction ou des bâtiments publics ont été conçus avec l'aide de technologies dont l'objectif est d'améliorer l'efficacité énergétique, de la consommation de l'eau, du chauffage, de la réduction des émissions de CO² et l'utilisation de matériaux de provenance locale et la réutilisation de leur surplus. LEED est aujourd'hui le système d'évaluation environnementale des bâtiments le plus utilisé au monde, et le modèle sur lequel se basent la plupart des nouveaux autres systèmes. L'utilisation des panneaux Bencore permet l'acquisition de crédits LEED pour les nouvelles construction ou rénovations.

EA - Consommation d'Energie et Impact sur l'Atmosphère

Crédit 1 - Optimiser la performance énergétique 1 - 19 points

MR - Matériaux et Ressources

Crédit 1.1 - Réutilisation dans la construction:

Maintien des murs, sols et plafonds existants 1 - 3 points

Crédit 1.2 - Réutilisation dans la construction:

Maintien des éléments ou murs intérieurs non porteurs 2 points

Crédit 3 - Réutilisation des matériaux 1 - 2 points

Crédit 5 - Utilisation de matériaux extraits ou produits à une distance limitée (matériaux locaux) 1 - 2 points

QI - Qualité de l'environnement intérieur

Crédit 4.3/op. 2 - Matériaux à faible émissions: sols (planchers) 1 point

Crédit 8.1 - Luminosité et ouverture: éclairage naturel 1 point

Pour plus d'information sur le GBC et les crédits LEED, visiter notre site www.bencore.it

FABRICATION

| 23

Tous les produits Bencore peuvent être Usinés, possibilité de galbage des panneaux, habillage des chants. Des Cubes et d'autres formes géométriques peuvent être fabriqués (voir le site web www.plasticdetails.it pour voir des exemples de réalisations). Bencore a choisi un système d'installation de porte coulissante pouvant s'adapter aux panneaux et mettant l'accent sur la qualité et l'esthétique. Les Panneaux Bencore peuvent être installés en utilisant des systèmes et profilés standards disponibles sur le marché. Bencore peut fournir sur simple demande un produit spécifique pour rétro-éclairé les planchers surélevés (Starlight Floor), ainsi qu'un système de soutien spécial (type rehausse métallique) de 1m x 1 m prévu pour la gamme de produits Bencore.

Pour des renseignements d'ordre techniques se référer au "Manuel Technique des produits Bencore" accessible sur www.bencore.it

MISSION

| 03

Technologie und Umweltschutz sind seit jeher die Inspirationsprinzipien der Bencore-Herstellung. Bencore-Paneele sind einige der wenigen Produkte, bei denen Technologie, Umweltschutz und Design perfekt miteinander verschmelzen, indem sie eine Verbindung aus mechanischen Leistungen, Leichtigkeit, Transparenz und Farbe bieten, die mit einer stark ästhetischen Charakterisierung verbunden ist, welche sie, trotz zahlreicher Nachahmungsversuche, in ihrer Art einmalig macht. Das Angebot der Bencore-Produkte ist das Ergebnis einer vollkommen italienischen Forschungs- und Entwicklungstätigkeit im hochmodernen Technologiebereich der Kunststoffbranche. Transparenz, mechanische Leistungen, Leichtigkeit, Energieeffizienz, Logistik und Installation, Recycelbarkeit der Materialien und im Vergleich zu den Materialien der Konkurrenz, bis zu 50% Rohstoffersparnis sind in der Welt der Innenarchitektur ein entscheidender Schritt nach vorn. Der Ursprung sämtlicher Rohstoffe ist europäisch und die Produkte werden komplett in Italien hergestellt.

STARLIGHT

| 07

Starlight ist eine Verbundplatte, in der sich einzigartige Eigenschaften ergänzen: Leichtigkeit, Strukturalität, Transparenz und Design. Kein anderes Produkt schließt gleichzeitig diese 4 Charakteristiken, die es einmalig machen, ein: Unzählige Anwendungsmöglichkeiten: Etagen, erhöhte Fußböden, Trennwände, Türen und andere, mit dieser Produkttypologie vereinbare Situationen.

STARLIGHT BASIC | Das Basisprodukt der Starlightkollektion _ **STARLIGHT EXTRA** | Für Anwendungen, bei denen höhere strukturelle Leistungen notwendig sind _ **STARLIGHT PLUS** | Für Anwendungen, bei denen die Feuerreaktionsklasse verlangt wird _ **STARLIGHT FLOOR** | Für erhöhte Fußböden mit Rückbeleuchtung _ **STARLIGHT MAXI** | Version mit einer Stärke von 45 und 60 mm

LIGHTBEN

| 11

Lightben ist eine Verbundplatte, die Starlight ähnlich sieht, aber noch leichter ist und interne Zellen von zylindrischer Form hat. Verfügt über einzigartige Lichtdurchlässigkeits- und streuungseigenschaften, wodurch sie sich besonders gut für Anwendungen mit Rückbeleuchtung eignet. Unzählige Anwendungsmöglichkeiten: Etagen, Trennwände, Türen, abgehängte Decken und andere, mit dieser Produkttypologie vereinbare Situationen.

LIGHTBEN BASIC | Standardprodukt der Lightbenkollektion _ **LIGHTBEN PLUS** | Für Anwendungen, bei denen die Feuerreaktionsklasse verlangt wird _ **LIGHTBEN LARGE 36** | Größere Zellen 10 mm (Standardgröße 7 mm) _ **LIGHTBEN MINI** | Stärken: 9 und 11 mm _ **LIGHTBEN MINI PLUS** | Lightben Mini mit durchsichtigem Kern und Beschichtungen wie Lightben Plus _ **LIGHTBEN CC PLUS** | Farbiger Polycarbonatkern aus zylinderförmigen Zellen mit Außenbeschichtung aus PETG in glänzender und satiniertem Ausführung _ **LIGHTBEN KAOS** | Unterschiedliche Zellengrößen: 4-7 mm _ **LIGHTBEN KAOS 3D SCHWARZ** | Schwarzer Polycarbonatkern aus zylinderförmigen Zellen mit drei verschiedenen Durchmessern (4-7-12 mm)

HEXABEN

| 17

Hexaben, Neuheit bei Bencore®, kombiniert Aluminium (innerer Kern) und Akryl oder PETG (Außenbeschichtung). Ist die leichteste Platte der Reihe und erzeugt in der Version mit satinierten Beschichtungen unnachahmliche Transparenz- und Schatteneffekte.

Dieses Produkt verbindet das äußerst technische Element des Aluminiumkerns mit dem emotionalen Element, das von den unterschiedlichen Lichteffekten innerhalb der einzelnen Wabenkerne, die den Verbund "leben" lassen, übertragen wird. Unzählige Anwendungsmöglichkeiten: Etagen, Trennwände, Türen und andere, mit dieser Produkttypologie vereinbare Lösungen.

HEXABEN SMALL | Das Basisprodukt der Hexabenkollektion: Die Zelle hat einen Durchmesser von 9 mm _ **HEXABEN SMALL PLUS** | Ultraleichte Verbundplatte mit Aluminiumkern und transparenter, farbloser PETG-Beschichtung in glänzender oder satinierter Ausführung _ **HEXABEN LARGE** | Hexaben in der Version mit größeren Zellen (25 mm) _ **HEXABEN LARGE PLUS** | Produkt der Hexabenreihe mit Feuerreaktionszertifikat

ENVIRONMENT

| 21

BENCORE Mitglied von GBC Italien - Leed Zertifizierung
Der Green Building Council Italien ist ein No-Profit-Verband, Bestandteil von USA GBC, Gesellschaft, die das unabhängige Zertifizierungssystem LEED - Leadership in Energy and Environmental Design - unterstützt, dessen Parameter präzise Planungs- und Errichtungskriterien für gesunde Gebäude, energetisch effizient und mit geringen Umweltauswirkungen festlegen. Das mit der Marke LEED verbundene Zertifizierungssystem legt außerdem einen Marktwert für "Green buildings", also Gebäude, die das LEED-Zertifizierung erlangen, fest. Die Verwendung von Bencore-Paneele ermöglicht, sowohl für neu errichtete als auch für restaurierte Gebäude, in denen sie angebracht werden, LEED KREDITE zu erwerben. Bencore-Produkte tragen für folgende LEED-Kredite zum Erwerb einer Punktezahl bei:

EA - Energie und Atmosphäre

Kredit 1 - Optimierung energetischer Leistungen 1-19 Punkte

MR - Materialien und Ressourcen

Kredit 1.1 - Wiederverwertung der Gebäude: Erhaltung von Mauerwerk, Dachböden und vorhandenen Verkleidungen 1-3 Punkte

Kredit 1.2 - Wiederverwertung der Gebäude: Erhaltung von 50% nicht struktureller Innenelemente 2 Punkte

Kredit 3 - Wiederverwertung von Material 1-2 Punkte

Kredit 5 - Innerhalb kurzer Entfernung (regionale Materialien) abgebaute, bearbeitete und hergestellte Materialien 1-2 Punkte

QL - Interne Umweltqualität

Kredit 4.3/Zus. 2 - Materialien mit niedriger Emission: Fußbodenbeläge 1 Punkte

Kredit 8.1 - Tageslicht und Sicht: Tageslicht in 75% der Räume 1 Punkte

Nähere Infos über GBC und LEED KREDITE auf der Webseite bencore.it

HERSTELLUNG

| 23

Alle Produkte der Bencore-Reihe können, je nach Bedarf, gebogen und eingefasst, bearbeitet und maßgerecht zugeschnitten werden (auch im 45°-Winkel). Es können Würfel und andere geometrische Formen verwirklicht werden (siehe Webseite www.plasticdetails.it für einige Beispiele). Bencore schlägt für seine Platten unterschiedliche Installationssysteme vor: Darunter befindet sich zum Beispiel eins für Schiebetüren, das Qualität und Ästhetik hervorhebt. Bencore-Platten können auf jeden Fall mithilfe marktüblicher Standardsysteme installiert werden. Zur Verwirklichung von erhöhten Fußböden mit Rückbeleuchtung hat Bencore ein spezifisches Produkt, Starlight Floor, entwickelt, hierfür wurde eine dazu geeignete Halterung 1 Mt. X 1 Mt. entworfen. Für technische Informationen konsultieren Sie bitte das Produkthandbuch auf unserer Internetseite www.bencore.it

MISIÓN

| 03

Tecnología y Ecología han sido siempre los principios inspiradores en lo que producción se refiere en Bencore. Los paneles Bencore se encuentran entre los pocos productos donde la tecnología, la ecología y el diseño están perfectamente reunidos juntando propiedades mecánicas, peso ligero, transparencia, colores y una calidad estética elevada, estas características hacen que productos Bencore sean únicos a pesar de los muchos intentos de imitación. La gama de productos Bencore es el resultado de la actividad de I + D de tecnología de última generación en la producción de materiales plásticos. Transparencia, propiedades mecánicas, peso ligero, la eficiencia energética, logística e instalación, uso de materiales reciclables, y el ahorro de hasta un 50% de la materia prima en comparación con productos similares, Bencore es un hito en el mercado de los productos de interior en arquitectura. Todas las materias primas utilizadas proceden de la Unión Europea y los productos son totalmente fabricados en Italia.

STARLIGHT

| 07

Starlight es un panel cuyas características se componen por su ligereza, rigidez, translucidez y diseño. Ningún producto tiene todo eso al mismo tiempo, estas cuatro características que forman Starlight son exclusivas e únicas. Las aplicaciones son innumerables: mesas, suelos elevados, tabiques, puertas y todo lo que se puede hacer con un panel de diseño compuesto.

STARLIGHT BASIC | Colección de Starlight productos estándar _ **STARLIGHT EXTRA** | Superior en rigidez y también muy adecuado para aplicaciones de alta carga _ **STARLIGHT PLUS** | Conveniente para usos donde se requieren certificados al fuego _ **STARLIGHT FLOOR** | Diseñado para contraluz en suelos elevados _ **STARLIGHT MAXI** | Espesores: 45 y 60 mm

LIGHTBEN

| 11

Lightben es un panel compuesto similar al Starlight, pero más ligero y con diferentes celdillas que forman el núcleo - cilíndrico. La estructura única del grupo reacciona con la luz, creando un efecto único y semi-transparente, por lo que es especialmente adecuado para la retroiluminación. Las aplicaciones son innumerables: mesas, tabiques, techos y todo lo que se puede hacer con un panel de diseño compuesto.

LIGHTBEN BASIC | Colección Lightben Producto standard _ **LIGHTBEN PLUS** | Conveniente para los usos donde se requieren certificados al fuego _ **LIGHTBEN LARGE 36** | Mayor tamaño de las celdillas: 10 mm (tamaño estándar de 7 mm) _ **LIGHTBEN MINI** | Espesores: 9 y 11 mm _ **LIGHTBEN MINI PLUS** | Lightben Mini con núcleo translúcido e interior y exterior como el Lightben Plus _ **LIGHTBEN CC PLUS** | Base coloreada con celdillas cilíndricas con capas externas en PETG transparente acabados satinado o brillante de policarbonato con protección UV _ **LIGHTBEN CC BLACK** | Policarbonato negro central en las celdillas cilíndricas con capas externas en PETG transparente con acabados satinado o brillante _ **LIGHTBEN KAOS** | Las celdillas de varios tamaños: 4.7 mm _ **LIGHTBEN KAOS 3D BLACK** | Policarbonato Negro con núcleo de celdillas cilíndricas con tres tamaños de diámetro (4-7-12 mm)

HEXABEN

| 17

Hexaben es la última creación de Bencore®. Hexaben combina el aluminio (principal) y acrílico (hojas externas). En la colección Bencore®, Hexaben es el panel más ligero y crea efectos únicos semi-transparentes, sobre todo en acabado mate/frost.

Hexaben combina un elemento técnico, el núcleo de aluminio, y otra emocional, debido a los efectos de luz creados dentro de las celdillas internas que "STARLIGHT" el panel de material compuesto. Las aplicaciones son innumerables: aplicaciones en interiores de diseño arquitectónico y mobiliario _ **HEXABEN SMALL** | Hexaben producto estándar de 9 mm _ **HEXABEN SMALL PLUS** | Panel ultraligero compuesto con un núcleo de nido de abeja en aluminio, unido a capas externas en PETG transparente con acabado satinado o brillante _ **HEXABEN LARGE** | Hexaben con celdillas mayores dimensiones (25 mm) _ **HEXABEN LARGE PLUS** | Línea de producto Hexaben con un certificado de reacción al fuego

ENVIRONMENT

| 21

BENCORE miembro de GBC Italia - certificación LEED Green Building Council de Italia es una asociación sin ánimo de lucro, filial de Green Building Council en EE.UU. Una compañía que promueve el sistema de certificación independiente LEED- Líder en Energía y Diseño Ambiental. LEED es un sistema internacionalmente reconocido de certificación verde del edificio, proporcionando la verificación por terceros de que un edificio o comunidad fue diseñado/a y construido/a utilizando técnicas destinadas a mejorar el rendimiento sobre el ahorro de energía, uso eficiente del agua, la reducción de las emisiones de CO2, la mejora de la calidad ambiental interior, gestión de los recursos y sensibilidad a sus efectos. LEED es actualmente el sistema más utilizado en todo el mundo para este tipo de certificaciones. El uso de paneles Bencore permite la adquisición de créditos LEED para edificios nuevos o renovaciones:

EA - Energy and Atmosphere

Crédito 1 - Optimizar el rendimiento energético puntos del 1 al 19

MR - Materials & resources

Crédito 1.1 - Manteniendo y reutilizando las paredes existentes, pisos y techo puntos del 1 a 3

Crédito 1.2 - Creación de la reutilización de mantener los elementos interiores no estructurales punto 2

Crédito 3 - Materiales de reutilización punto 1 - 2

Crédito 5 - Regional Materiales punto 1 - 2

QL - Indoor environmental Quality

Crédito 4.3/op. 2 - Sistemas de Materiales de Baja Emisión sistema de planta punto 1

Crédito 8.1 - Luz natural y vistas punto 1

Para más información sobre GBC y LEED visita bencore.it

FABRICACIÓN

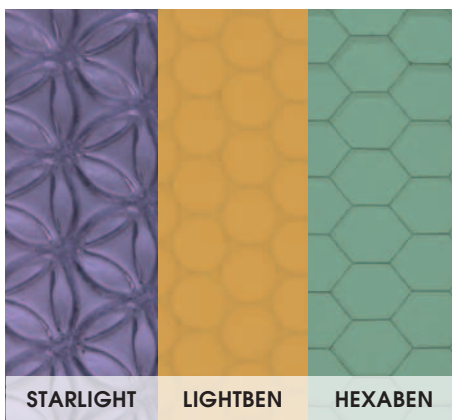
| 23

Todos los productos Bencore se pueden trabajar y cortar de acuerdo a las especificaciones, curvado y canteado. Se pueden fabricar cubos y otras formas geométricas (véase el sitio web www.plasticdetails.it de ejemplos). Bencore ha optado por un sistema especial de puerta corredera con paneles poniendo especial atención en la calidad y la estética. Los paneles Bencore pueden ser instalados utilizando sistemas estándar que son fácilmente disponibles en el mercado. Bencore ha creado un producto específico para suelos técnicos retro iluminados, Starlight también tienen un sistema de apoyo especial de 1mt x 1 mt que se incluye en la gama de productos Bencore.

Para obtener información técnica, por favor consulte el manual del producto en www.bencore.it



1 | SCEGLI UNA COLLEZIONE
SELECT A COLLECTION



2 | SCEGLI UN PRODOTTO
SELECT A PRODUCT

STARLIGHT	BASIC EXTRA PLUS FLOOR MAXI
LIGHTBEN	BASIC LARGE 36 MINI PLUS CC PLUS CC BLACK KAOS KAOS 3D BLACK
HEXABEN	SMALL SMALL PLUS LARGE LARGE PLUS

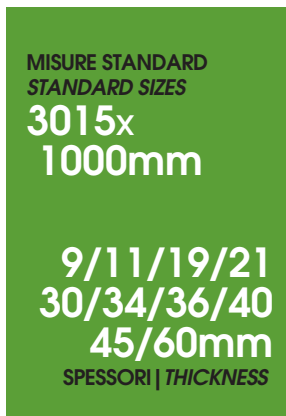
3 | SCEGLI UN COLORE | FINITURA
SELECT COLOUR | FINISH



20
COLORI
STANDARD
STANDARD
COLOURS

2
FINITURE
T (LUCIDA)
S (SATINATA)
FINISHES
T (GLOSSY)
S (SATIN)

4 | SCEGLI LE DIMENSIONI
SELECT DIMENSIONS



5 | PREVENTIVO | ORDINA
QUOTE | ORDER



nel sito **bencore:**
in bencore web site:



220

foto di applicazioni
application photos



schede tecniche prodotto
product datasheets

acquisto scatole campioni
buying Samples box



lista distributori
Sales Network

Bencore distribuisce in oltre
Distributors' contacts in over

50

paesi
countries



Ambiente - GBC LEED
Environment GBC LEED



manuale tecnico in
technical manual in

5

lingue
languages

bencore.it



Via S. Colombano, 9 | 54100 Massa (Italy)
 Tel. +39 0585 830129 | Fax +39 0585 835167
 P. IVA 00721540458 | info@Bencore.it | www.bencore.it
 2011 Bencore, all rights reserved

Member of

